



Custom Shuffleboard Tables



## Shuffleboard Tables

### Shuffleboard Table Styles (9', 12', 14', 16' & 18' lengths)

All tables 32" high. Columbia, Kyoto and Taos tables not available in 9' size.

#### Two (2) Legs:

9' table approx. 108" long (92" X 20" playing surface)

#### Three (3) Legs:

12' table approx. 144" long (128" X 20" playing surface)

14' table approx. 168" long (152" X 20" playing surface)

#### Four (4) Legs:

16' table approx. 192" long (192" X 20" playing surface)

18' table approx. 216" long (200" X 20" playing surface)

#### All Tables:

32" wide x 32" high

Jack Logo or No Logo Free.  
Custom Logo \$595-\$995.



Westlake



Carmel



Columbia



Huntington



Kyoto



Menlo



Park



Redondo



Seattle



Taos



Urban



Veranda

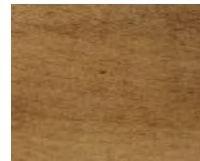
### Maple Wood Finish Options (see attached page for further details)



Sand



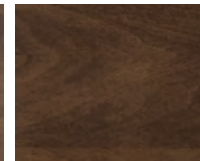
Caramel



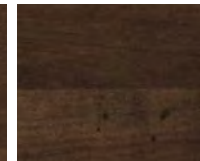
Distressed  
Caramel



Toffee



Tobacco



Distressed  
Tobacco



Toast

### Maple Wood Finish Options (Continued)



Coffee



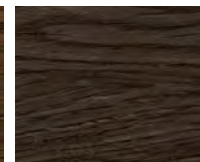
Onyx Black



Coastal  
Grey



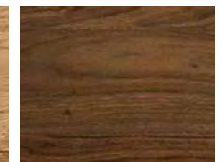
Dark Oak



Graphite  
Oak



Rustic  
White Oak



Natural  
Walnut

### Oak & Walnut Wood Finishes

### Collar Material Options



Avanti  
Black

Avanti  
Grey

Avanti  
Pecan

Newcastle  
Bone

Newcastle  
Slate

### Alley Material Options



Modvel  
Grey

Modvel  
Khaki

Modvel  
Black

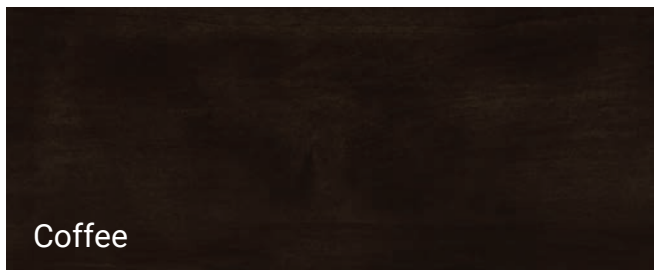
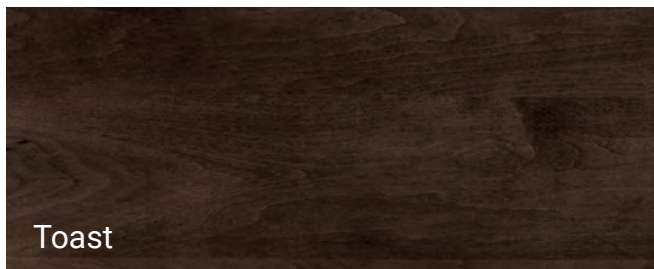
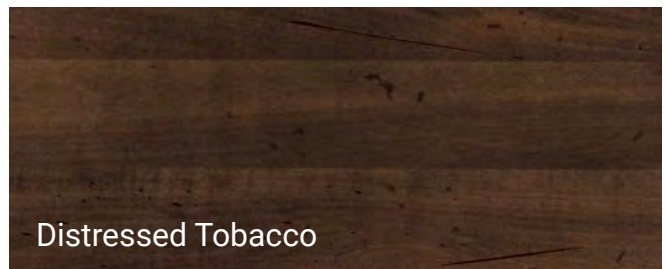
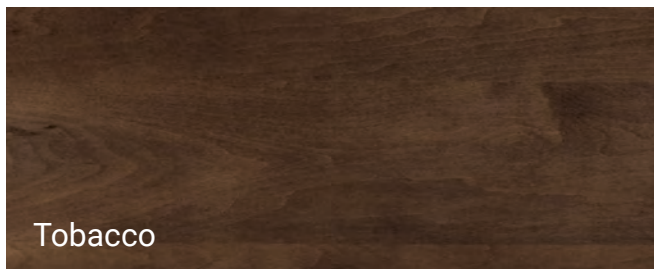
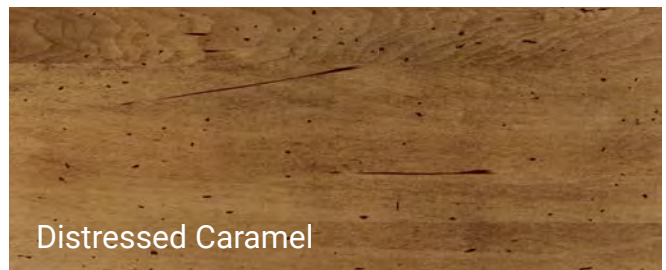
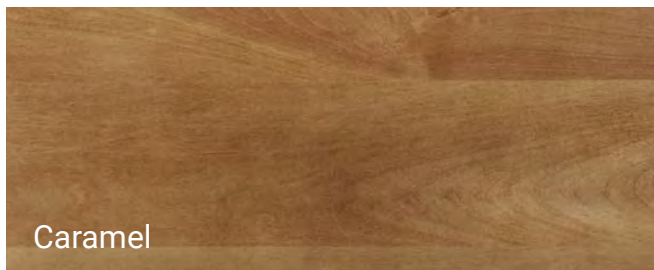
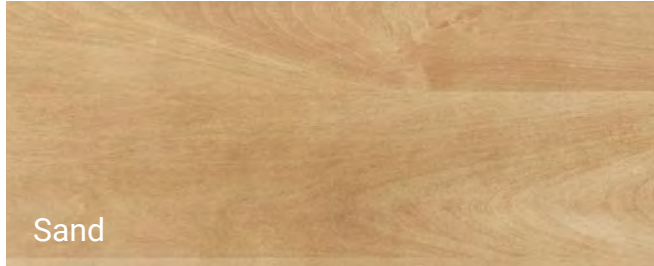
Modvel  
Olive

Modvel  
Peat



## JACK Standard (Maple) Wood Finishes

Our game tables and chairs are made from kiln-dried, 100% solid Maple hardwood. After a thorough sanding, wood is treated with a non-grain raising (NGR) solution to equalize the tones of the natural wood. After a careful application of stain, the wood is then sealed with a post-catalyzed conversion varnish to seal out moisture and add visual depth and clarity to the finish. After the sealer has dried, it is sanded again for a smooth finish and given a further topcoat of post-catalyzed conversion varnish.







# JACK

## About Our Primary Wood Finishes



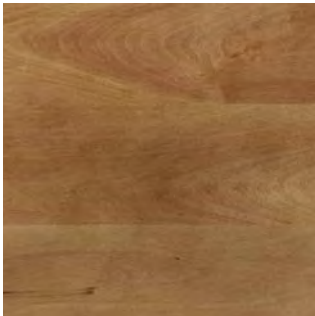
### Sand

Sand is newer finish is one of our lightest finishes with a warm glow and visible woodgrain. Sand pairs well with all furniture styles and virtually felt colors.



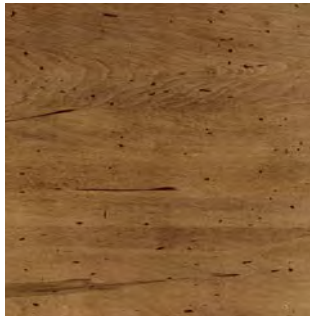
### Toffee

Toffee is a new finish that is somewhat lighter and than Tobacco and slightly cooler..



### Caramel

Caramel is one of our lighter finishes with a warm glow and visible woodgrain. Caramel adds airiness to a room and pairs well with transitional and contemporary styles.



### Distressed Caramel

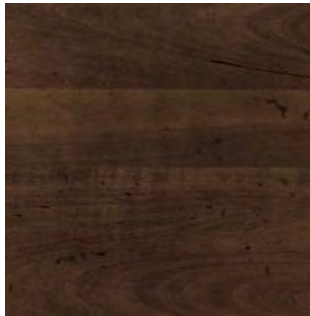
10% Upcharge

We lightly stress our Caramel finish with pitting and scratches which are then highlighted with a slightly darker stain and topped off with a light glazing to create the Distressed Caramel finish.



### Tobacco

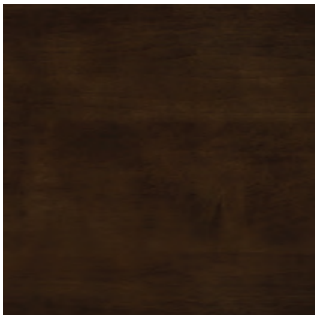
Tobacco is a traditional favorite combining warmth, moderate darkness and visible woodgrain. Tobacco works equally well across all design styles and cloth colors.



### Distressed Tobacco

10% Upcharge

Darkened pitting and scratch stains give our Distressed Tobacco its distinctive character. This lends a slightly darker and more casual look and feel to the regular Tobacco finish.



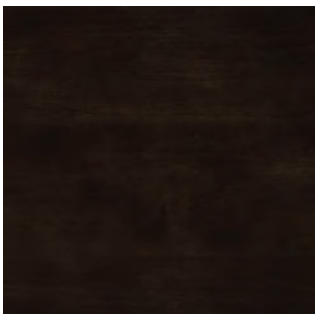
### Toast

Toast is slightly lighter and cooler than Coffee. Toast pairs especially well with Khaki, Camel, Taupe, Bottle Green, Navy and Wine billiard cloth.



### Coastal Grey

Coastal Grey has a striking, contemporary feel. The opaque grey toner hides the grain pattern but allows the texture to show through. Coastal Grey pairs well with Academy, Charcoal, Black and Navy.



### Coffee

Coffee is the darkest of our finishes short of Onyx. Very similar to Umber but slightly darker and cooler. Coffee pairs especially well with Khaki, Taupe, Black, Bottle Green and Wine billiard cloth.



### Onyx Black

Ony Black is an opaque black finish with a slightly matte appearance. Not a glossy "piano black" finish, this is a rich, full expression of onyx. This color pairs well with almost all felts.

**Please Note:** Jack Game Room can often custom match existing finishes. Please call us at 833.833.6050 or email us at [support@jackgameroom.com](mailto:support@jackgameroom.com) for further information.



## JACK Premium Oak Wood Finishes

Our game tables and chairs are available in kiln-dried, 100% solid oak hardwood for an upcharge of 20%. After a thorough sanding, wood is treated with a non-grain raising (NGR) solution to equalize the tones of the natural wood. After a careful application of stain, the wood is then sealed with a post-catalyzed conversion varnish to seal out moisture and add visual depth and clarity to the finish. After the sealer has dried, it is sanded again for a smooth finish and given a further topcoat of post-catalyzed conversion varnish.



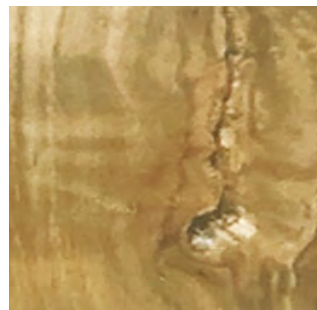
Dark Oak  
20% Upcharge



Graphite Oak  
20% Upcharge



Rustic Natural White Oak  
20% Upcharge



**NOTE:** Rustic White Oak can contain some live knots and live edges.



Faux Leather Collar Options



Alley Fabric Options





















































